



Intelligent Spindle Solutions Provider



SPINDLE TECHNOLOGY | MACHINE SPINDLES | SPECIAL SPINDLES | ACCESSORIES | SERVICE

## COMPANY INTRODUCTION

**Triquench India**® Established in the Year 2012 in Ahmedabad (Gujarat, India)- (Initially as a partnership Firm) with the prime objective of providing engineering precision assembly **focusing categorically on the “Spindle for the CNC machinery”**. From 2019 the company has converted to **Triquench India**® Pvt. Ltd and is looking forward to growing in the field of manufacturing and catering to a wider portfolio of customers throughout India and Abroad. Showcasing the will of creating results and delivering the best possible solution at any point of time to our customers- is the differentiating factor of handling many satisfied customers throughout the country and expanding to the world.

Design, Supply, and Manufacturing of Spindles. The wider portfolio of CNC machines, with which our spindles have been dealing are the CNC Router Machines, Stone Carving and Engraving Machines, Wood carving machines, PCB Drilling, Grinding Machines to mention a few. We also provide customization of spindles design and development as per our customers needs, thus giving an edge of acquiring different technologies

Adding to our certifications: We are ISO 14001:2015, ISO 9001:2015, CE, and RoHS 2 certified, showcasing our commitment and will to deliver quality as a by-product of every interaction and transaction we deal with.



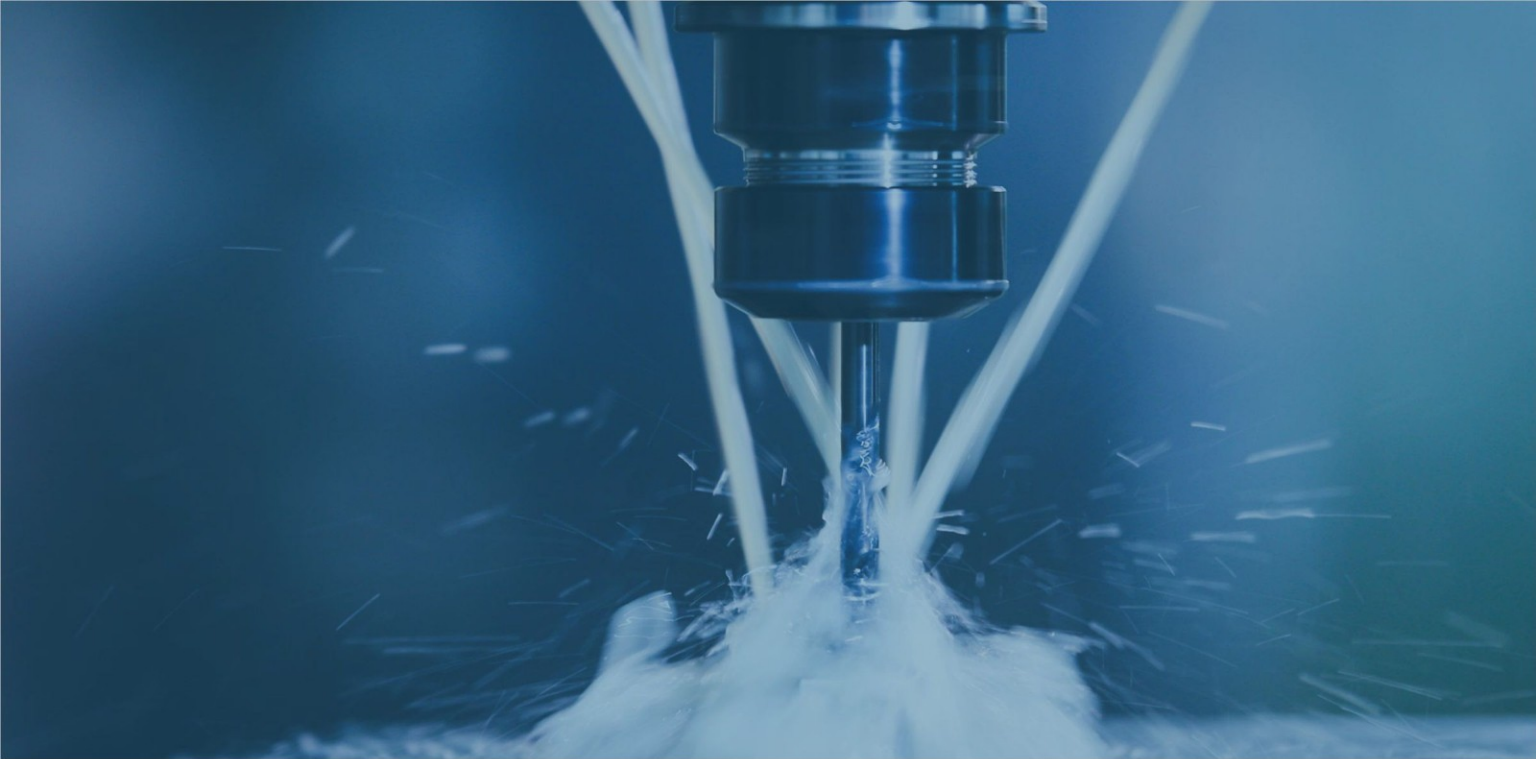
## THE FOCUS ON THE MACHINERY EFFECTIVENESS AND OWNERS EMPOWERMENT

Triquench India Pvt Ltd has a very diversified and strong experience in the handling and management of Spindles of any make and any type. As having a portfolio of refurbishing spindles and servicing them, it has given an extra edge in the identification and delivering the spindles that suits perfectly to the customers needs.

Along with spindles, having the supportive portfolio of all spindle accessories such as Bearings, ER Collet and Nut, Chiller, VFD and many other, helps in delivering quality service to the customers all at a single location.

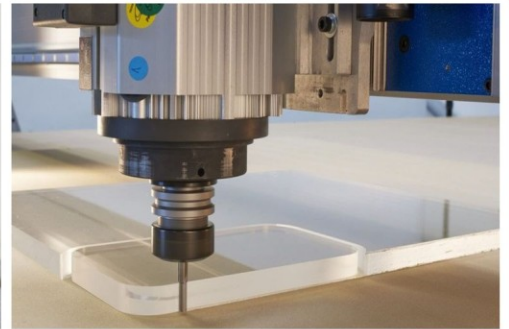
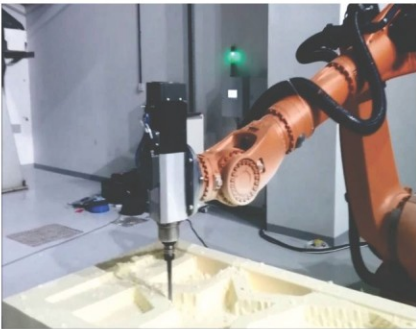






## APPLICATION AREAS OF SPINDLES:

Triquench India Pvt. Ltd. Spindles are being utilized in a multitude of industries, involved in varied applications. The industries vary from automotive to Mold Manufacturing to aerospace Engineering. With reference to machining process, spindles play a crucial role in providing a fast, accurate and seamless process flow and quick product output.



## OUR SALES AND SERVICE SUPPORT WE ARE LITERALLY REBUILDING ANY SPINDLE BRAND OF ANY MAKE

We provide expert rebuilds for applications like Milling, Turning, Grinding, Boring, Reaming, Drilling and Tapping Spindles

### Our experience covers domains such as:

- CNC Router Machine
- CNC PCB Drilling Machine
- CNC Milling Machine
- CNC Lathe Machine
- CNC Stone Carving
- CNC Pattern Making
- CNC Bangle Making
- Robotics and Automation

Triquench India Pvt. Ltd. Operates on a precision prototype-based workshop (Accuracy is maintained within 2 Microns) for creating the out of the circulation parts and straightening or reconditioning parts to be used enabling superior quality control on the repairs of the spindle components.



A technical line drawing of a mechanical assembly, possibly a pump or valve, is shown in a light blue color. The drawing is overlaid on a darker blue background. The assembly features a central vertical shaft with a handle or lever at the top, and a base with several circular components. The text "OUR PRODUCT PORTFOLIO" is written in white, bold, sans-serif capital letters on the left side of the image.

# OUR PRODUCT PORTFOLIO



## WATER COOLED SPINDLES:

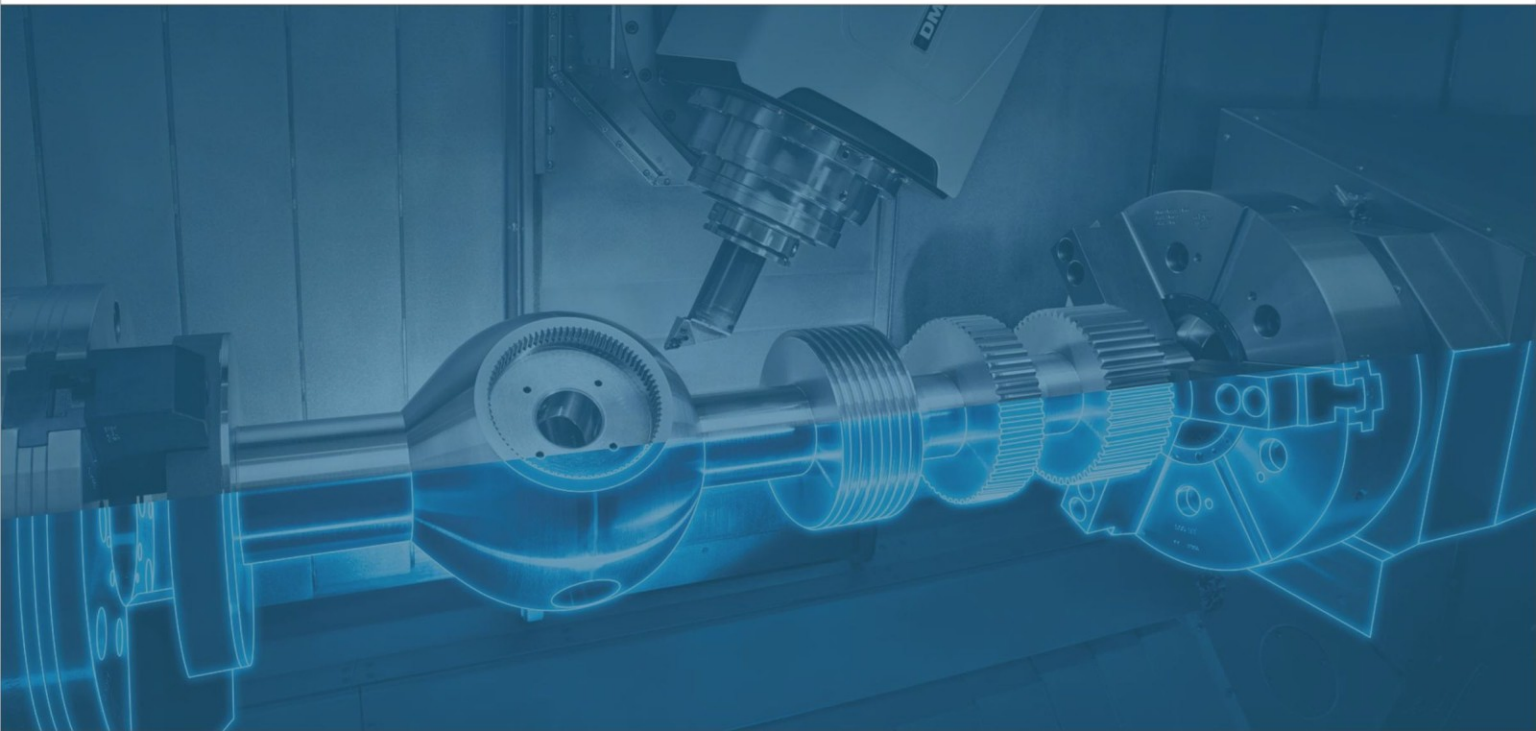


Model No.	Power	Speed	Voltage	Current	Frequency	Torque	Spindle Dia	Pole	Joint of nose	Bearing Type	Kg	Price
W03240R75M1	0.3 Kw	60000 RPM	75 V	1.5 A	1000 Hz	0.04 Nm	48 mm	2	ER 8			17100/-
W08240R220M1	0.8 kW	24000 RPM	220V	2.5 A	400 Hz	0.31 Nm	65 mm	2	ER11 (0.5mm to 7mm)	2 X 7002 P4 2 X 7000 P4	2.8	9900/-
L12600R220M1	1.2 kW	40000 RPM	220 V	5.0 A	666 Hz	0.42 Nm	62 mm	2	ER11 (0.5mm to 7mm)	2 X 7002 P4 2 X 7000 P4	4	26100/-
W15240R220M1	1.5 kW	24000 RPM	220 V	5.0 A	400 Hz	0.56 Nm	80 mm	2	ER11 (0.5mm to 7mm)	2 X 7002 P4 2 X 7002 P4	4.5	13500/-
W22240R220M1	2.2 kW	24000 RPM	220 V	8.0 A	400 Hz	0.87 Nm	80 mm	2	ER20(1mm to 13mm)	2 X 7005 P4 2 X 7002 P4	5.4	16200/-
W22240R380M1	2.2 kW	24000 RPM	380 v	8.0 A	400 Hz	0.87 Nm	80 mm	2	ER20(1mm to 13mm)	2 X 7005 P4 2 X 7002 P4	5.4	44100/-
W22240R220M0800	2.2 kW	24000 RPM	220V	8.0 A	800 Hz	2.33 Nm	80 mm	4	ER20(1mm to 13mm)	2 X 7005 P4 2 X 7004 P4	8	19800/-
W30240R220M1	3.0 kW	24000 RPM	220 V	9.8 A	400 Hz	1.27 Nm	100 mm	2	ER20(1mm to 13mm)	2 X 7005 P4 2 X 7003 P4	8.3	19800/-
W30240R380M1	3.0 kW	24000 RPM	380 V	9.8 A	400 Hz	1.27 Nm	100 mm	2	ER20(1mm to 13mm)	2 X 7005 P4 2 X 7003 P4	8.3	26100/-
W45240R380M1	4.5 kW	24000 RPM	380 V	12.0 A	400 Hz	1.45 Nm	100 mm	2	ER20(1mm to 13mm)	2 X 7005 P4 2 X 7003 P4	9	34830/-
W55240R380M1	5.5 kW	24000 RPM	380 V	13.0 A	400 Hz	2.91 Nm	125 mm	2	ER25(1mm to 16mm)	2 X 7007 P4 2 X 7005 P4	22	48600/-
W65180R380M1	6.5 kW	24000 RPM	380V	14.0 A	300 Hz	3.18 Nm	125 mm	2	ER32(2mm to 20mm)	2 X 7008 P4 2 X 7005 P4	23.5	55080/-
W75240R380M132	7.5 kW	24000 RPM	380V	14.0 A	400 Hz	3.18 Nm	125 mm	2	ER32(2mm to 20mm)	2 X 7008 P4 2 X 7005 P4	23.5	81000/-
W75240R380M140	7.5 kW	24000 RPM	380 V	15.0 A	800 Hz	5.76 Nm	125 mm	4	ER40 (3mm to 30mm)	2 X 7008 P4 2 X 7005 P4	24	72000/-
W75240R380M1800	7.5 kW	24000 RPM	380 V	14.5 A	800 Hz	5.76 Nm	125 mm	4	ER32(2mm to 20mm)	2 X 7008 P4 2 X 7005 P4	26.5	108000/-
W160150R380M1	9.0 kW	15000 RPM	380 V	20 A	750 Hz	6.5 NM	125 mm	6	ER32(2mm to 20mm)	2 X 7008 P4 2 X 7006 P4	27	108000/-
W112180R380M1	12 kW	18000 RPM	380 V	26 A	900 Hz,	6.5 NM	125 mm	6	ER32(2mm to 20mm)	2 X 7008 P4 2 X 7006 P4	27	

# AIR COOLED SPINDLE ROUND BODY



Model No.	Power	Speed	Voltage	Current	Frequency	Torque	Spindle Dia	Pole	Joint of nose	Bearing Type	Price
A08240R220M1	0.8 kW	24000 RPM	220 V	3.1 A	400 Hz	0.31 Nm	65 mm	2	ER11 (0.5mm to 7mm)	2 X 7002 P4 2 X 7000 P4	9900/-
N08240R220M1	0.8 kW	24000 RPM	220 V	3.1 A	400 Hz	0.31 Nm	65 mm	2	ER11 (0.5mm to 7mm)	2 X 7002 P4 2 X 7000 P4	16200/-
A15240R220M1	1.5 kW	24000 RPM	220 V	5.0 A	400 Hz	0.47 Nm	80 mm	2	ER11 (0.5mm to 7mm)	2 X 7002 P4 2 X 7002 P4	13500/-
A22240R220M1	2.2 kW	24000 RPM	220 V	8.0 A	400 Hz	0.68 Nm	80 mm	2	ER20(1mm to 13mm)	2 X 7005 P4 2 X 7002 P4	17100/-





# AIR COOLED SPINDLE SQUARE BODY



Model No.	Power	Speed	Voltage	Current	Frequency	Torque	Pole	Joint of nose	Bearing Type	kg	Price
A08200S220M1	0.8 kW	20000 RPM	220 V/380 V	3.7 A/2.2 A	333 Hz	0.31 Nm	2	ER11 (0.5mm to 7mm)	2 X 7005 P4 2 X 7002 P4	4	13500/-
A15180S220M1	1.5 kW	18000 RPM	220 V	5.8 A	300 Hz	0.91 Nm	2	ER20(1mm to 13mm)	2 X 7005 P4 2 X 7002 P4	7	14400/-
A22180S380M120	2.2 kW	18000 RPM	220 V/380 V	7.9A / 4.6 A	300 Hz	1.25 Nm	2	ER20(1mm to 13mm)	2 X 7005 P4 2 X 7002 P4	7.2	16200/-
A35180S2238M120	3.5 kW	18000 RPM	220 V/380 V	12 A/7.2 A	300 Hz	1.68 Nm	2	ER20(1mm to 13mm)	2 X 7005 P4 2 X 7002 P4	7.5	17100/-
A35180S2238M125	3.5 kW	18000 RPM	220 V/380 V	12 A/7.2 A	300 Hz	1.68 Nm	2	ER25(1mm to 16mm)	2 X 7007 P4 2 X 7002 P4	8.5	22500/-
A45180S380M1	4.5 kW	18000 RPM	380 V	9.0 A	300 Hz	2.27 Nm	2	ER32(2mm to 20mm)	2 X 7008 P4 2 X 7002 P4	12	26100/-
A45180S380M1	6.0 kW	18000 RPM	380 V	12.0 A	300 Hz	2.78 Nm	2	ER32(2mm to 20mm)	2 X 7008 P4 2 X 7002 P4	15	30600/-
A75180S380M132	7.5 kW	18000 RPM	380 V	15.0 A	300 Hz	3.58 Nm	2	ER32(2mm to 20mm)	2 X 7008 P4 2 X 7004 P4	17.2	39600/-
A75180S380M140	7.5 kW	18000 RPM	380 V	28.7 A	300 Hz	6.65 Nm	2	ER40(3mm to 30mm)	2 X 7010 P4 2 X 7005 P4	30	72000/-
A75180S380M140	7.5 kW Independent Fan	18000 RPM	380 V	28.7 A	300 Hz	6.65 Nm	2	ER40(3mm to 30mm)	2 X 7010 P4 2 X 7005 P4	30	81000/-
A90180S380M1	9.0 kW	18000 RPM	380 V	17.8 A	300 Hz	6.7 Nm	2	ER32(2mm to 20mm)		29	99000/-
A60180S380M1TKM	6.0 KW (TEKNOMOTOR)	18000-24000 RPM	220 V/380 V	21 A	300 Hz	2.78 Nm	2	ER32(2mm to 20mm)		16	62100/-

# ATC SPINDLE MOTOR (WATER COOLED)



Model No.	Power	Speed	Voltage	Current	Frequency	Torque	Spindle Dia	Pole	Tool Holding	Weight	Price
ISO1018600R200M1	1.8 kW	60000 RPM	220V	6.5 A	1000Hz	0.28 N.m	62 mm	2	ISO10	5	180000/-
O18600R220M1	1.8 kW	60000 RPM	220V	6.5 A	1000Hz	0.28 N.m	62 mm	2	6mm	5 Kg	90000/-
O22400R220M1	2.2 kW	30000 RPM	220V	8.5 A	1000Hz	0.87 N.m	80 mm	4	ISO20	9 Kg	225000/-
BT30180R380M1	5.5 kW	18000 RPM	380V	20A	600Hz	0.87 NM	125 mm	4	BT30	24 Kg	207000/-
BT40110R380M1	7.5 kW	11000RPM	380V	17 A	550 HZ	12 NM	125 mm	6	BT40	29	225000/-

# ATC SPINDLE MOTOR (AIR COOLED)



Model No.	Power	Speed	Voltage	Current	Frequency	Torque	Pole	Tool Holding	Weight	Price
A90240S380M1BT30	9 kW	24000 RPM	380V	22A	800Hz	7.16 N.m	4	BT30	35 Kg	180000/-

# BELT DRIVEN SPINDLE

TriQuench India specializes in providing standard and custom Belt Driven Spindles for Milling Spindle, Lathe Spindle, and Grinding Spindle. With various options available like Internal Grinding Spindle and External Grinding Spindle, we see that they cater to the need to drive out precise outputs from the machinery – some of the applications being Vertical Milling Machine, CNC Turning Machine, and CNC Lathe Machines.

## MILLING SPINDLE



Model No.	Nose Taper	Locating Diameter	Total Length	Flange Diameter	SPEED	Lubrication	Front Bearing	Rear Bearing	Bearings	Price
MTMSBT3090	BT-30	90H6	277 mm	120 mm	8000 RPM	GREASED PACKED	7009 P4	7008 P4	2 + 2	54000/-
MTMSBT30100	BT-30	100H6	332 mm	140 mm	8000 RPM	GREASED PACKED	7010 P4	7008 P4	2 + 2	62100/-
MTMSBT40120	BT-40	120H6	410 mm	165 mm	8000 RPM	GREASED PACKED	7012 P4	7010 P4	4 + 2	77400/-
MTMSBT40150	BT-40	150H6	500 mm	202 mm	8000 RPM	GREASED PACKED	7014 P4	7012 P4	4 + 2	87300/-
MTMSBT50190	BT-50	190H6	650 mm	250 mm	6000 RPM	GREASED PACKED	7020 P4	7016 P4	4 + 2	170100/-
MTMSBT50155	BT-50	155H6	600 mm	208 mm	6000 RPM	GREASED PACKED	7016 P4	7014 P4	3 + 2	170100/-



## LATHE SPINDLE



Model No.	Nose Taper	Flange Diameter	Total Length	Locating Diameter	Bore Diameter	SPEED	Lubrication	Front Bearings	Rear Bearing	Bearings	Price
MTLSA2-3 BORE DIA-32	A2-3	170 Dia	290 mm	'130 h6 X 130 mm	32 mm	6000 RPM	GREASED PACKED	7011 P4	7010 P4	3 + 2	53100/-
MTLSA2-4 BORE DIA-38	A2-4	180 Dia	322 mm	'152 h6 x 162 mm	38 mm	5000 RPM	GREASED PACKED	7014 P4	7011 P4	4 + 2	60300/-
MTLSA2-4 BORE DIA-40	A2-4	195 Dia	433 mm	140 h6 x 162	38 mm	5000 RPM	GREASED PACKED	7014 P4	7012 P4	2 + 2	60300/-
MTLSA2-5 BORE DIA-42	A2-5	235 Dia	533 mm	'170 h6 x 310 mm	42 mm	5000 RPM	GREASED PACKED	7016 P4	7014 P4	4 + 2	66600/-
MTLSA2-5 BORE DIA-46	A2-5	180 Dia	370 mm	140 h6 x 200	46 mm	5000 RPM	GREASED PACKED	7014 P4	7013 P4	2 + 2	66600/-
MTLSA2-6 BORE DIA-56	A2-6	230 Dia	565 mm	170 h6 X 320 mm	56 mm	3500 RPM	GREASED PACKED	7018 P4	7016 P4	4 + 2	87300/-
MTLSA2-6 BORE DIA-65	A2-6	230 Dia	400 mm	180 h6 X 200 mm	65 mm	3500 RPM	GREASED PACKED	7020 P4	7018 P4	2 + 2	87300/-
MTLSA2-8 BORE DIA-75	A2-8	300 Dia	642 mm	'230 h6 x 335 mm	75 mm	3000 RPM	GREASED PACKED	7024 P4	7020 P4	4 + 2	135000/-

## EDGE BANDING SPINDLE MOTOR



Model No.	Power	Speed	Voltage	Current	Frequency	Torque	Pole	Joint of nose	Bearing Type	Price
E08180S2238WF	0.8 kW	18000 RPM	380 V / 220 V	3.9 A / 2 A	300 Hz	0.31 Nm	2	ER- 11	6005 P4 6000 P4	18000/-
E037120S2238L	0.35 kW	18000 RPM	380 V	3.7 A	200 Hz	0.31 Nm	2	ER- 11	6005 P4 6000 P4	18000/-
E037120S2238R	0.35 kW	12000 RPM	380 V / 220 V	1.8 A	200 Hz	0.31 Nm	2	ER- 11	6005 P4 6000 P4	18000/-
E08180S2238LS	0.8 kW (long Shaft)	18000 RPM	220 V	3.9 A	200 Hz	0.31 Nm	2	ER- 11	6005 P4 6000 P4	18000/-

## SPINDLE ACCESSORIES



Bearing



ER Collet



ER Nut



VFD



Tool Holder



Chiller Unit



Gripper



Tool Holder Fork



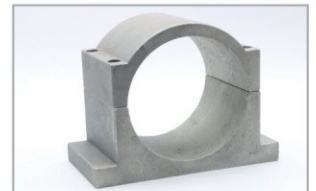
Turret



Connector



Hydro Pneumatic Cylinder



Clamp